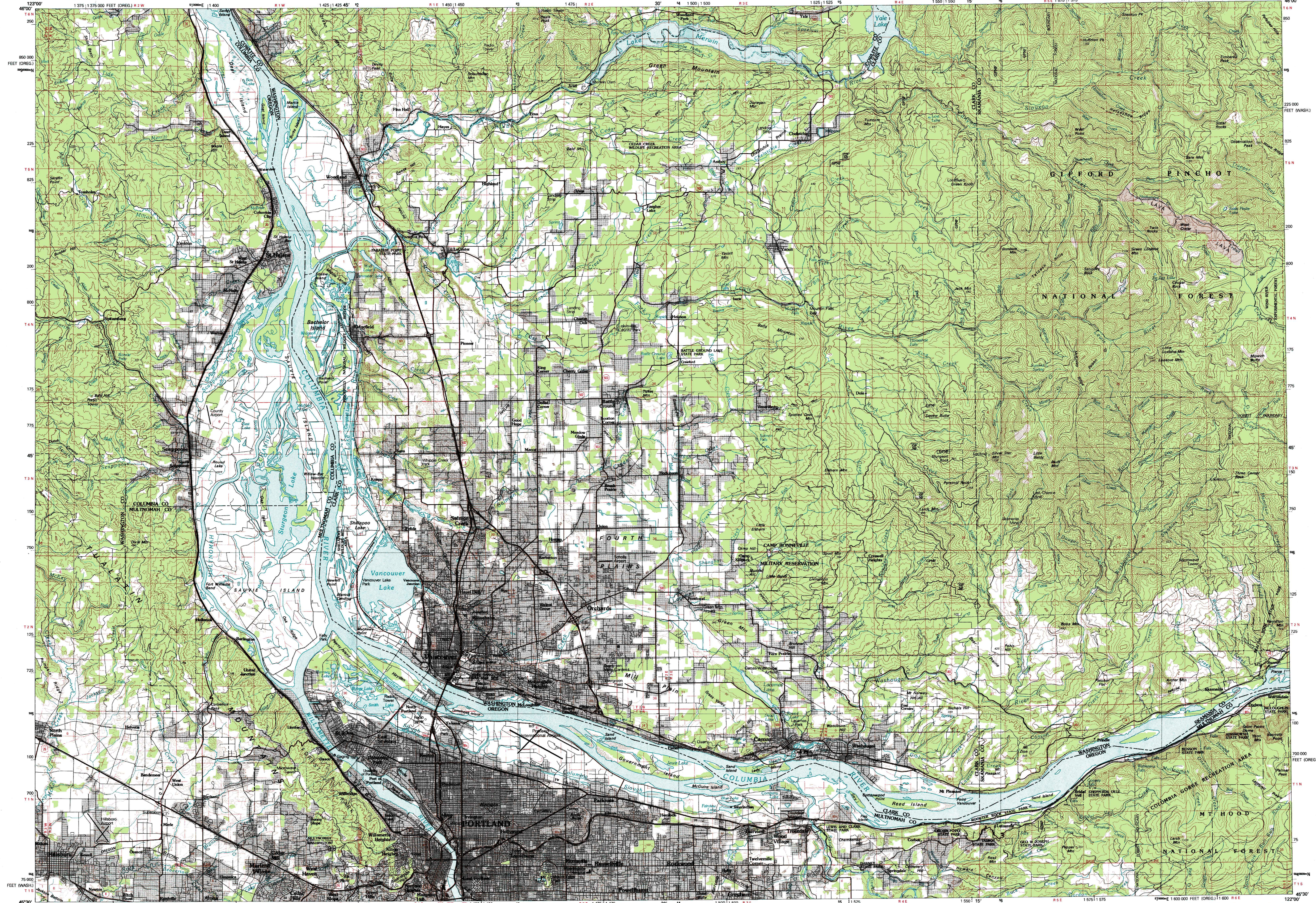


VANCOUVER, WASHINGTON-OREGON

30X60 MINUTE SERIES (TOPOGRAPHIC)

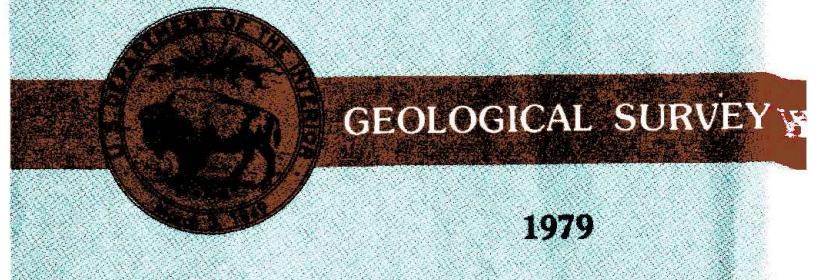


1:100 000-scale metric topographic map of Vancouver WASHINGTON-OREGON



30 X 60 MINUTE QUADRANGLE SHOWING

- Contours and elevations in meters
- Highways, roads and other manmade structures
- Water features
- Woodland areas
- Geographic names



Produced by the United States Geological Survey
 Compiled from USGS 1:24 000 and 1:62 500-scale topographic maps dated 1953-1978. Planimetry revised from aerial photographs taken 1975 and other source data. Revised information not field checked. Map edited 1979
 1927 North American Datum (NAD 27). Projection and 10 000-meter grid: Universal Transverse Mercator, zone 10
 25 000-foot tiles: Washington coordinate system, north zone
 south zone and Oregon coordinate system, north zone
 The difference between NAD 27 and North American Datum of 1983 (NAD 83) is too small to show at this scale. The values of the shift between the datums for 7.5-minute intersections are given in USGS Bulletin 1875
 There may be private inholdings within the boundaries of the National or State reservations shown on this map

CONTOUR INTERVAL 50 METERS
 WITH SUPPLEMENTARY CONTOURS AT 10-METER INTERVALS
 NATIONAL GEODETIC VERTICAL DATUM OF 1929

THIS MAP COMPLES WITH NATIONAL MAP ACCURACY STANDARDS

Meters	Feet
2	6.5617
4	13.1234
6	19.6851
8	26.2468
10	32.8085

To convert meters to feet multiply by 3.2808
 To convert feet to meters multiply by 0.3048

DECLINATION DIAGRAM

 UTM grid convergence (19N and 1979 magnetic declination 0.0M) at center of map
 Diagram is approximate

ADJOINING MAPS	1	2	3
1 Astoria	4	5	8
2 Mount St. Helens	6	7	8
3 Mount Adams			
4 Willamette River			
5 Hood River			
6 Yamhill River			
7 Oregon City			
8 Mount Hood			

FOR SALE BY U.S. GEOLOGICAL SURVEY, DENVER, COLORADO 80225
 OR RESTON, VIRGINIA 22092

Topographic Map Symbols

- Primary highway, hard surface
- Secondary highway, hard surface
- Light duty road, principal street, hard or improved surface
- Other road or street; trail
- Route marker: Interstate; U.S.; State
- Railroad: standard gage; narrow gage
- Bridge; overpass; underpass
- Tunnel: road; railroad
- Bulk up or loading elevation
- Airport: building; landing strip
- National boundary
- State boundary
- County boundary
- National or State reservation boundary
- Land grant boundary
- U.S. public lands survey: range, township, section
- Range: township; section line: protected
- Power transmission line: pipeline
- Dam; dam with lock
- Cemetery; building
- Windmill; water well; spring
- Mine shaft; adit or cave; mine, quarry; gravel pit
- Contouring; picnic area; U.S. location monument
- Rocks: cliff and scree
- Discarded surface: strip mine; levee; sand
- Contours: index; intermediate; supplementary
- Bathymetric contours: index; intermediate
- Stream, lake: perennial; intermittent
- Rapids; large and small; falls; large and small
- Area to be submerged; marsh; swamp
- Land subject to controlled inundation; woodland
- Scrub; mangrove
- Orchard; vineyard